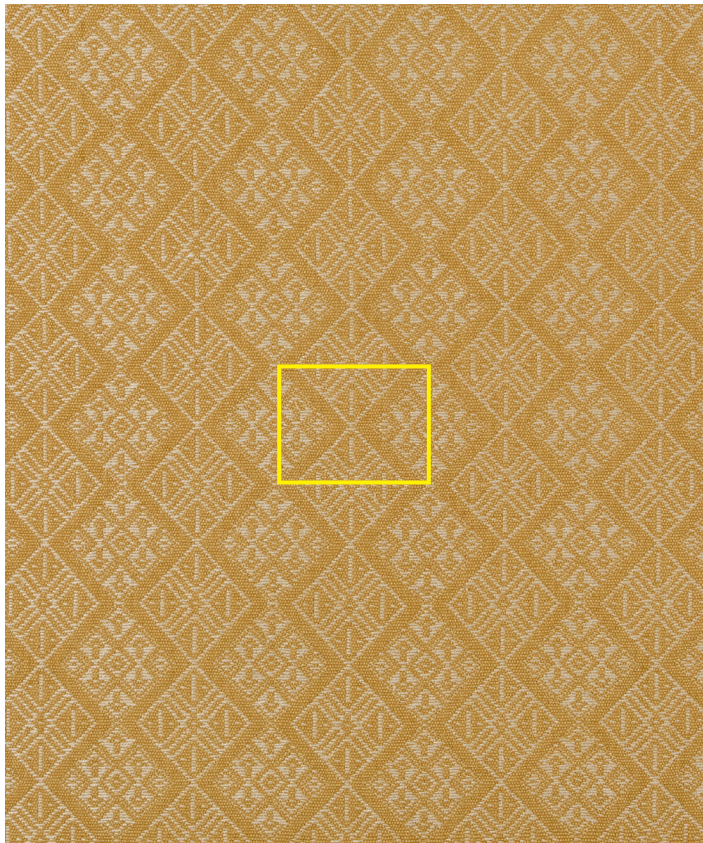


Pangkeb Churi Sandalwood | PC-07

The design repeats two motifs from a more variously patterned Bhutanese textile - can choose to use either side of the fabric. Pangkeb refers to a multi-purpose traditional Bhutanese textile, used for (amongst other things) napkins, door hangings and altar decorations.



Design	Pangkeb Churi
Colour	Sandalwood
Code	PC-07
Composition	100% Silk
Width	121cm / 47.5in
Repeat	6.5cm (h) 5.5cm (v) 2.5in (h) 2in (v)
Weight	372g/sqm
Notes



Pangkeb Churi Sandalwood | PC-07

www.namaysamay.com

